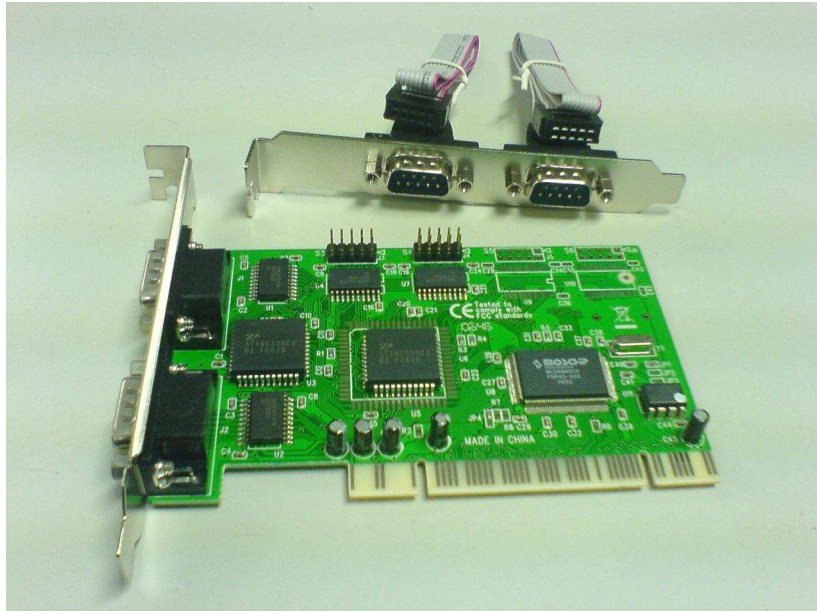


4056A

PCI I/O Card with 4 Serial Ports



4056A serial expansion card offers you four ports of DB9M or DB25M connection for all your project needs. The ports have a data transfer rate up to 921.6 Kbps. The card is ideal for project like the POS system, automation assembly, ISDN terminal, and more. The serial card is plug-n-play capable and installation is a breeze. Bundle with the card is Sunix's unique software which can increase the FIFO memory up to 128K byte.

FEATURES

- Support 32/64-bit PCI bus
- 3.3V & 5V Universal PCI
- High speed 921.6 Kbps
- High performance 128K byte FIFO
- Ready for 64-bit system
- Plug-n-play

